

# Hydraulic Drilling Attachment



**WOLF**<sup>®</sup>

Excellence and Tradition in Rock Drilling

Since  
**1974**

# SONIC 3500

The **SONIC 3500**, drilling attachment is the premier option for rock drilling and has superior productivity compared to hydraulic or pneumatic track drill. The operator can drill using radio command control. This safety feature allows the operator to be either inside or outside the cabin depending on topography. In a matter of minutes, with minor adjustment, three distinct functions can be performed: Drilling, demolition or excavation. Diesel consumption is also greatly reduced. The **SONIC 3500**, is a Productive, Safer, Versatile Cost effective solution to your rock drilling needs.



Hose Reel



Rod Changer  
(Continuous Rod Shuffle)



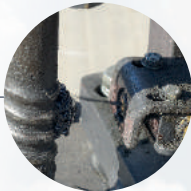
Dust Collector  
(Primary and Secondary)  
(Optional)



Auto-Greaser



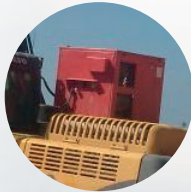
Hydraulic Centralizer



Rod Greaser



Compressor Frame  
(Optional)



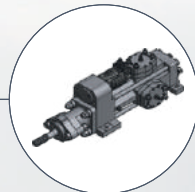
Hydraulic Driven  
Compressor (Optional)



Water Tank (Mist)



Digital Inclinometer



Drifter (Faces Cab)



## ADVANTAGES

- Reduced Maintenance Cost
- Reduced Diesel Consumption\*\*
- Safer to Operate, Reducing risk to the operator
- Simple to Operate
- Low Investment cost
- High production
- Multi Function: Drilling, Excavating, Breaking

\*\* Will depend on the excavator size and brand.

## TECHNICAL FEATURES

- Totally Hydraulic, requires just one operator
- Drilling Diameter 2 1/2" to 4" (64 to 102mm), with Top Hammer MW-80H
- Interactive Digital Console to Monitor
- Digital Inclinator and Anti-Jamming
- Rod Changer, Rod Greaser, Hydraulic Centralizer
- Water Mist
- Dust Collector (Primary and Secondary) (Optional)

## Accessories (Optionals)



Remote Control

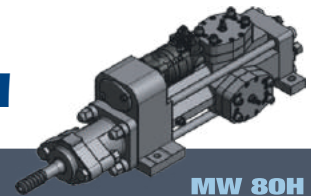
Options Available	Sonic 3500
Rod Changer (T38, T45, T51)	Standard
Hydraulic Centralizer	Standard
Greaser Pump	Standard
Dust Collector (Primary and Secondary)	Opcional
Radio Control	Standard
Hose Reel	Standard
Digital Inclinator	Standard
Anti-Jamming	Standard
Water Tank (Water Mist)	Standard
Nitrogenio Charger	Opcional
Diesel Compressor Platform	Opcional
Hydraulic Driven Compressor	Opcional

## CE CERTIFICATED

Apply equipment send European Community (Optional)

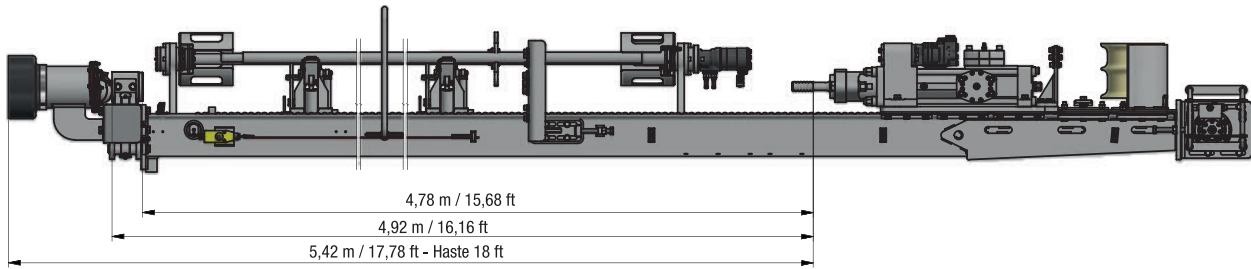


## TOP HAMMER MW 80H

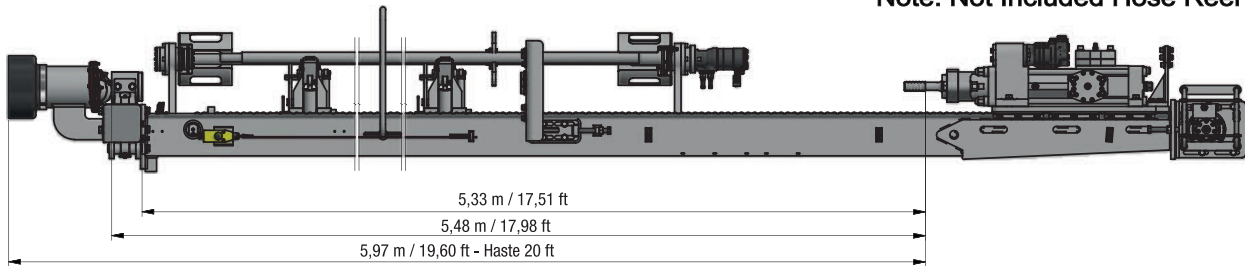


	MW 80H
Working Pressure	140 bar (2.030 psi)
Impact Power	19 kW (26 hp)
Impact Frequency	2.600 bpm
Weight	237 Kg
Rotation (RPM)	0 - 1 50 rpm
Rotation Torque	750 Nm (533 lbf/ft)
Thread and Length	T38 / T45 / T51 - 3,6 m
Drilling Diameter	2. 1/2" - 4"
Rod Changer Capacity	Carrousel 6 + 1
Rod Length	3,0m (10') - 3,6m (12')

# Transport Dimension



Note: Not Included Hose Reel

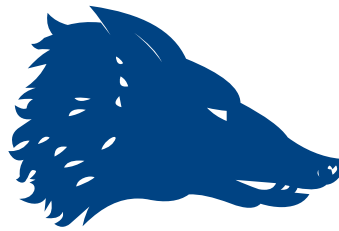


Weight: 7,716 lb / 3,500 kg

Length: 25.59ft / 7.8m

Width: 10 ft / 3m

Height: 6.56 ft / 2 m



[www.wolfrockdrills.com](http://www.wolfrockdrills.com)

**HEADQUARTER**  
**United States**

*WOLF AMERICAS*

info@wolfrockdrills.com

+1-407-704-2051

www.wolfrockdrills.com

**FACTORY**  
**BRAZIL**

Indaiatuba/SP / Brasil

+ 55 (19) 3825-6530

+ 55 (19) 3875-5460

info@wolf.com.br

WOLF Americas, reserves the right to alter specifications without Notice.  
Machines shown in pictures may be equipped with options.